



مؤسسة الشام الإنسانية
Al Sham Humanitarian Foundation

ANNUAL REPORT 2023



AHFrelief | AHF.ngo





2023
ANNUAL REPORT

Contents:

4	AHF in brief	43	Food security and emergency response program
5	Area of work and accessibility	46	Internal development
6	Strategic plan -2022-2025	47	Advocacy
7	Humanitarian response for the year 2023	47	Humanitarian coordination
11	Health program	48	Memberships
21	Nutrition and Pediatrics Program	49	Partners
29	Early recovery program	50	Addresses of Foundation's offices
35	Protection program	51	Bank account information

AHF in brief

Al-Sham Humanitarian Foundation (AHF) is a non-governmental, non-profit organization. It was established in 2011 in response to the Syrian humanitarian crisis and was officially registered in Turkey in 2013. The Foundation works to meet humanitarian needs by providing projects and humanitarian services for the most vulnerable groups in both Syria and Turkey.

The Foundation has qualified and experienced employees in the humanitarian sector, in addition to a strong structure in various fields based on international standards, in addition to a number of strategic partnerships and memberships in global networks.

The Foundation held a number of coordination roles in the humanitarian response in northwestern Syria during the previous years.



Vision: ✓ To be one of the most effective and distinguished Foundations in enabling the Syrian society to make it more stable and sustainable.



Mission: ✓ We contribute to providing humanitarian services and social development programs to build and empower the Syrian society with institutional competence and effective partnership.



Values: ✓ Quality ✓ Teamwork ✓ Initiative ✓ Credibility

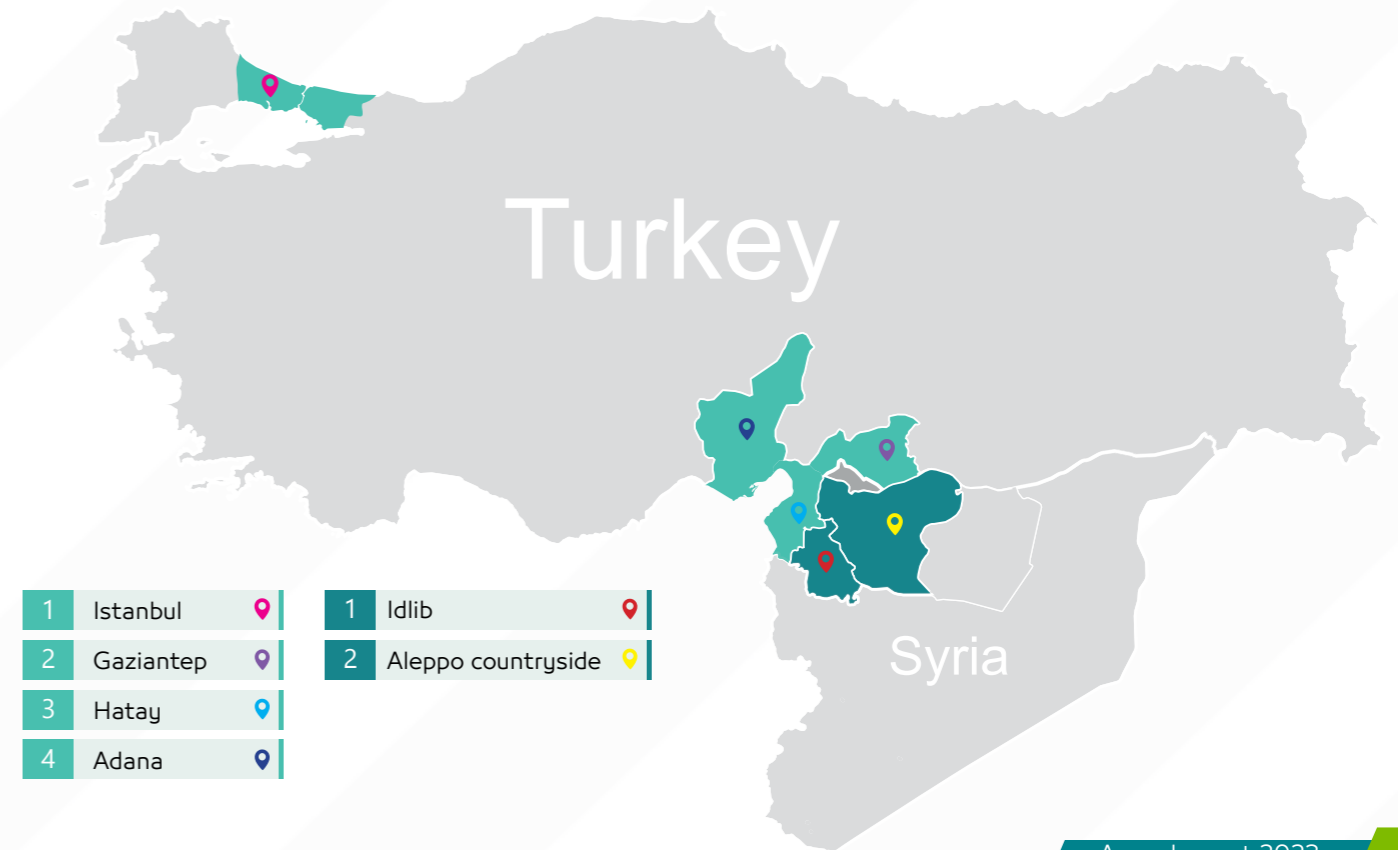


Main Objectives:

- ✓ Work within rational institutional effectiveness.
- ✓ Empowering the Syrian civil society with all its civil components.
- ✓ Contributing to achieving community development and security.
- ✓ Achieving stakeholder requirements and satisfaction.

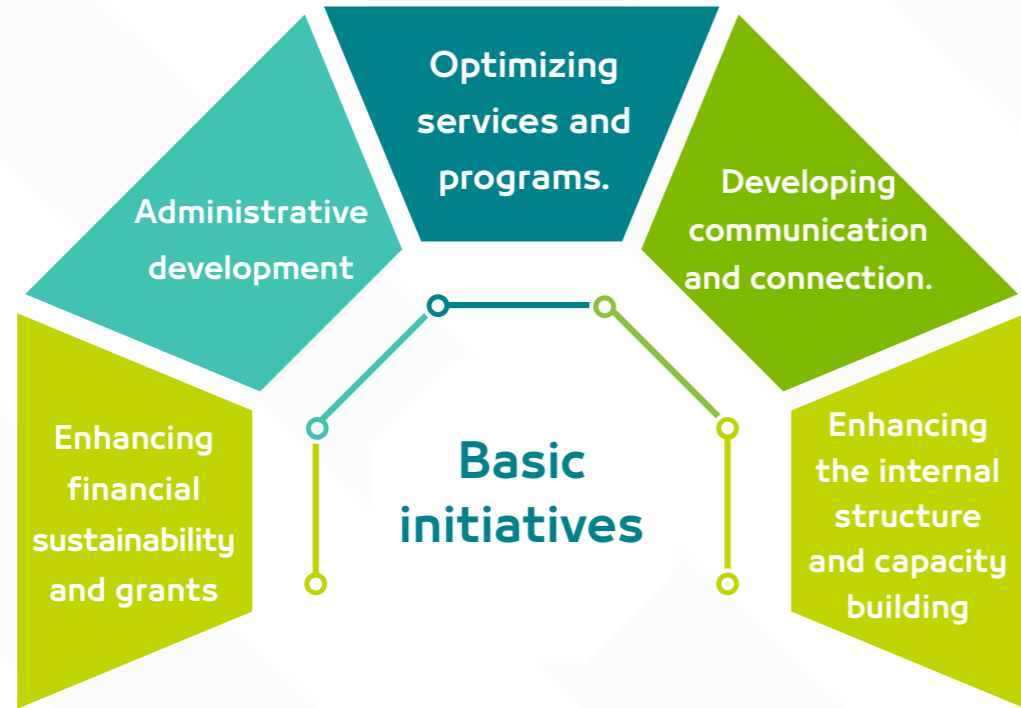
Area of work and accessibility

Al-Sham Humanitarian Foundation was able to expand its reach in the regions of northwestern Syria (Idlib Governorate and its countryside and the countryside of Aleppo Governorate) within the Syrian humanitarian response and the refugee response in Turkey in both Adana and Hatay. The Foundation has also acquired the necessary legal approvals to operate in these areas.

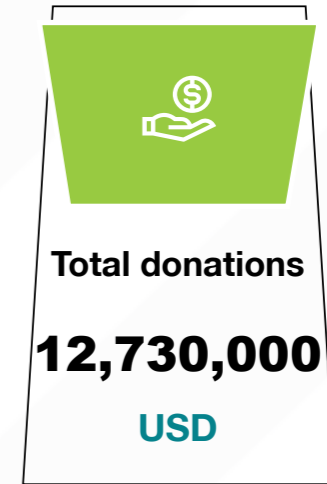
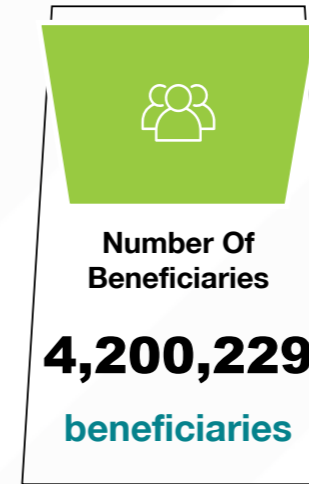


Strategic plan -2022-2025

Al-Sham Humanitarian Foundation launched, in the middle of 2022, its new strategic plan centered on five basic initiatives, under which the strategic goals that help achieve the strategic direction fall.



Humanitarian response for the year 2023





36,334
beneficiaries
230,000
USD



359,400
beneficiaries
2,100,000
USD



931,504
beneficiaries
5,100,000
USD



42,130
beneficiaries
700,000
USD



2,774,295
beneficiaries
4,600,000
USD





Health program

The program works to raise the level of medical care and services in Syria, by providing primary health care services through 4 dispensaries, a mobile clinic, and an ambulance system consisting of 25 cars that operate through complete coordination and systemic referral. It also provides secondary health care services through the Internal Diseases Hospital and the Surgical Hospital. Moreover, it launches specific projects that provide specialized services such as the Rehabilitation Center and the Hearing Center. The Foundation also contributed to responding to the cholera pandemic by establishing two cholera treatment centers in both Al-Dana and Al-Atareb.



Total donations

5,100,000

USD



Number of beneficiaries is

931,504

beneficiaries



Children

699,634

beneficiaries



Adults

231,870

beneficiaries



Persons with special needs

8,597

beneficiaries

Al-Sham specialized hospital for internal diseases

Al-Sham Specialized Hospital for Internal Diseases is one of the largest and most important hospitals in northern Syria, as it provides its distinguished services through the general internal, digestive, cardiac, and thoracic specializations, in addition to the upper and lower gastrointestinal endoscopy service, bronchoscopy, and bile duct endoscopy. The hospital receives critical cases in the department. The intensive care unit, consisting of 25 beds, provides health care for moderate cases through 35 beds in the ward, in addition to providing ambulatory services in the 6-bed emergency department that receives patients and critical cases from nearby hospitals around the clock.

Work area

Idlib- (Al-dana)

Number of beneficiaries

61,5k beneficiaries



Children

5,3k

beneficiaries



Adults

56,1k

beneficiaries



Persons with special needs

511

beneficiaries

Al-sham surgical hospital

This hospital contributes to enhancing the quality of specialized health services in the area. The hospital consists of an operations department consisting of three fully equipped operating rooms, an emergency department, a clinic department consisting of a general surgery clinic and an orthopedic surgery clinic, in addition to 12 ward beds, 3 care beds, a laboratory, an x-ray department. The hospital provides free medical services around the clock to residents and displaced people in the north of Idlib in the areas of Dana and Sarmada, through general, endoscopic, emergency and orthopedic surgeries, in addition to auxiliary services under the supervision of a specialized medical staff.

Work area

Idlib- (Al-dana)

Number of beneficiaries

37,5k beneficiaries



Children

15,9k

beneficiaries



Adults

21,6k

beneficiaries



Persons with special needs

383

beneficiaries

Al-Sham Center for Hearing Problems and Short Stature

Department of Audiology: In this department, children's hearing is evaluated and monitored using the latest devices and technologies in a fully equipped clinic, and appropriate hearing aids are provided for children based on the individual needs of each child.

-Department of speech rehabilitation: This department provides the necessary speech rehabilitation sessions for children who suffer from speech disorders and delays, while customizing specialized treatment programs for each child according to his or her individual needs. In addition, the center includes a specialized clinic for growth failure, where children suffering from growth failure are evaluated by a pediatric specialist, the necessary medical tests are performed, and the necessary treatment is dispensed, including providing free growth hormone needles to children in need.

The center's team works to provide specialized and comprehensive care for each child, focusing on improving their quality of life and developing their health and cognitive abilities.

Work area

Idlib- (Sarmada)

Number of beneficiaries

7,3k beneficiaries



Children

6,2k

beneficiaries



Adults

1,1k

beneficiaries



Persons with special needs

614

beneficiaries

Center for physical therapy and prosthetics

The center consists of the Prosthetic Limbs Department and the Physical Therapy and Rehabilitation Department. The Prosthetic Limbs Department is concerned with manufacturing and preparing limbs for lower limb amputees in addition to providing periodic maintenance for the limb and manufacturing plastic medical splints that support the limbs, while the Physical Therapy Department is concerned with training the injured and qualifying them to use the prosthetic limb optimally. It includes a clinic for examination, movement hall, children's training hall, electrical appliances hall, and a hall dedicated to training and qualifying women with a full female staff. Moreover, the center provides medical supplies to patients for free.

Work area

Idlib- (Al-dana)

Number of beneficiaries

1,2k beneficiaries



Children

219

beneficiaries



Adults

972

beneficiaries



Persons with special needs

350

beneficiaries

Al-sham Emergency System

Al-Sham Ambulance System was established in 2014 and it provides its services in northwestern Syria through 30 equipped ambulances specialized in transporting advanced emergency cases and referring patients to hospitals and medical centers and to border crossings in cooperation and coordination with the central referral system. In addition to that, there are ambulances with female staff in the system in order to provide assistance to female patients. Moreover, there is a special car for transporting people with special needs to provide the highest level of safety, comfort and speed. The system also participates effectively in providing effective response to the transportation of cholera cases.

Work area

Idlib governorate-
Aleppo countryside

Number of beneficiaries

31k beneficiaries



Children

14,3k

beneficiaries



Adults

15,7k

beneficiaries



Persons with
special needs

5,6k

beneficiaries

Centers for treating cholera

As response for the serious spread of cholera disease, two centers were equipped to treat it. The first center is located in Al-dana area with a capacity of 60 beds and the second center is located in Al-atareb area with the capacity of 50 beds. These two areas are regarded the hot spots of the spread of confirmed and expected cholera cases. The cases referred from neighboring centers and hospitals get received around the clock. These two centers provide all necessary medical services for cholera patients through an integrated medical team that is qualified with all necessary trainings to deal with the cases, treat them and monitor them. Moreover, the cadre provides recommendations and instructions related to how to avoid infection to all visitors.

Work area

Idlib governorate-
Aleppo countryside

Number of beneficiaries

6,7k beneficiaries



Children

3,6k

beneficiaries



Adults

3,1k

beneficiaries



Persons with
special needs

48

beneficiaries

Al-Sham Health Center in Khirbet Al-Jouz

The center provides primary health care services for more than 6 years and this is in response for the increased health requirements in an area full of camps in south of Idlib. The displaced persons and host community benefit from the medical consultation of this centers provided by the clinics of general medicine, pediatric and women's clinic. The center also provides necessary medicines for the patients as it contributed to enhancing the health situation in area since its establishment. The center also participates in the epidemiological surveillance of the region by reporting communicable diseases in order to respond to cases of disease outbreaks quickly and to track cases of infectious diseases, especially with the outbreak of cholera in northwestern Syria.

Work area

Idlib (Kherbat Aljoz)

Number of beneficiaries

23,8k beneficiaries



Children

13,3k

beneficiaries



Adults

15,5k

beneficiaries



Persons with
special needs

45

beneficiaries

Al-Sham Health Center in Al-atareb

As response for the increased need and the return of the residents whose number reached about 70k people in the city, the center provides primary health care services through the clinics of internal medicine, pediatric, dental, reproductive health, emergency and malnutrition. All children at the age of 6 to 59 months get screened, as well as pregnant and breastfeeding women and then all cases of moderate and severe malnutrition get treated in the center while the cases of extra severe malnutrition get referred to centers specialized in malnutrition. The centers provides treatment and monitoring for Leishmania cases, and it also provides basic auxiliary services like lab tests and medicines for the visitors.

Work area

Aleppo countryside
(Atareb)

Number of beneficiaries

61k beneficiaries



Persons with
special needs

704

beneficiaries



Adults

32,6k

beneficiaries



Children

28,4k

beneficiaries

Salama Health Center in Sajo

The center is located in the camp of Sajo, which is an area full of camps, most of which lack the initial health services. The center started its work in 2015 and it includes departments of internal medicine, pediatric, dental, ophthalmology and malnutrition clinics as well as women's department, and natural birth giving department which contains a clinic for reproductive health, travail and recovery. Moreover, it contains a department for basic auxiliary services including emergency, lab, rays and pharmacy. The clinics work with a managerial work hours while the obstetrics and emergency departments provide their services around the clock.

Work area

Aleppo countryside
(Sajo)

Number of beneficiaries

30,2k beneficiaries



Children

7,8k

beneficiaries



Adults

22,4k

beneficiaries



Persons with special needs

283

beneficiaries

Work area

Aleppo countryside
(Sajo)

Number of beneficiaries

4,6k beneficiaries



Children

2,5k

beneficiaries



Adults

2,1k

beneficiaries



Persons with special needs

18

beneficiaries

Kafra Health Center

The center is located in the town of Kafra, with a population of about 20 thousand people, along with neighboring camps. The center began work on 10/25/2023, providing inpatient clinic services, especially for patients with chronic diseases, a children's clinic, and a women's clinic through a midwife. The center also provides mental health services through the psychological support team and the gap-bridging clinic. Additionally, the center has a laboratory to cover patients' needs and a pharmacy that distributes medications for free.

Mobile dental clinic

In cooperation with the Turkish Red Crescent, the clinic works on providing services for four camps full of displaced persons in Al-sama area north of Aleppo. The clinic get periodically moved among the camps. The number of displaced persons in these camps is more than 40000. The clinic is equipped with all necessary medical equipment and provides basic dental services like extractions, endodontic treatments, regular and cosmetic fillings in a camp area that lacks dental services, as the clinic has greatly alleviated the suffering of the people due to the difficulty of reaching the centers that provide services, especially in the winter.

Work area

Aleppo countryside
(Sajo camps)

Number of beneficiaries

5,8k beneficiaries



Children

1,4k

beneficiaries



Adults

4,4k

beneficiaries

Supporting central rooms for routine vaccination in Idlib

Al-Sham Humanitarian Foundation is supervising the routine vaccination project in Idlib by supporting the central rooms for routine vaccination in Idlib, which are seven rooms, in cooperation with the World Health Organization, the Idlib Health Directorate and the Syria Vaccination Team. The project aims to resume the implementation of the activities of the vaccination program to cover all cases of children who are eligible for the vaccine according to the approved routine vaccination program (B Hep, B O, and Penta, IPV, OPV MMR) for children under two years and school-age children, in addition to the tetanus vaccine for women from 15-49 years.

Work area

Idlib

Number of beneficiaries

660,5k beneficiaries



Children

600,5k

beneficiaries



Adults

60k

beneficiaries

Success story



The child, "Mona," suffers from a condition of delayed motor development as a result of cerebral atrophy and a slight hearing loss. The child, accompanied by her mother, visited Al-Sham Center for Hearing and Short Stature, and was integrated into the Speech and Language Department after evaluating her condition and developing an appropriate treatment plan for her and working on it, and two months after the child attended the sessions with therapeutic treatment and continuous follow-up, the goals of the plan developed by the center team were achieved. In terms of receptive language, focus, attention, and visual-motor synergy were increased, and auditory discrimination performance was improved by executing commands, pointing to parts of the face, matching, and following one-step instructions.

As for productive language, the child produced many sounds and words, including papa, mama, and naming the possessive pronoun (I). In terms of speech, the performance of the tongue movement improved and made it more flexible through tongue exercises and the ability to blow and suction, in addition to the improvement in the psychological aspect of the child and her love of sitting and interacting in it and reducing the state of fear of sounds and interaction with others.

Success story



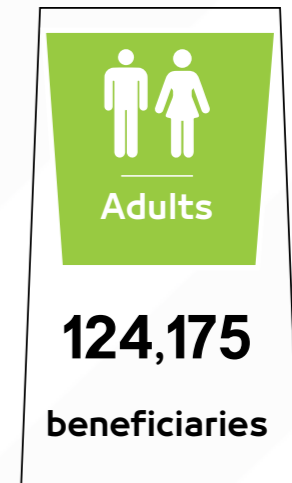
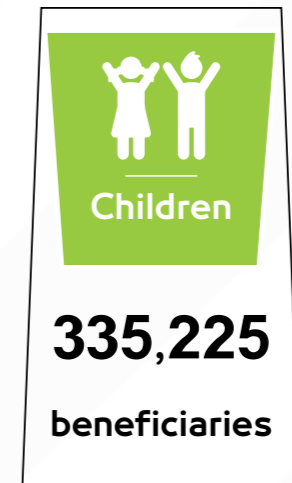
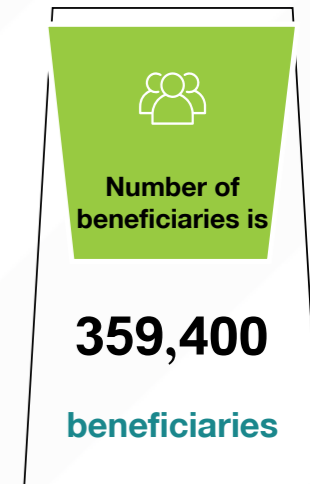
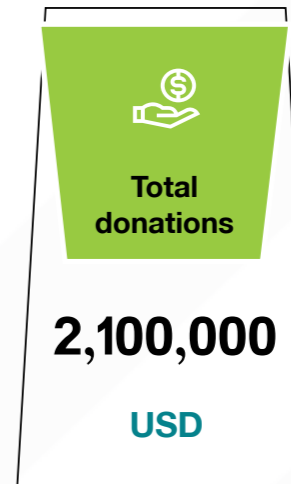
An elderly patient visited Sham Specialized Hospital for Internal Diseases with a story of acute respiratory failure with respiratory depression at rest and clouding of consciousness in the patient. After conducting the necessary examinations for him, the patient was admitted to the intensive care unit. The patient was intubated and placed on a mechanical ventilator, and the patient's vital signs were monitored. Additionally, consultation with a thoracic specialist, a care specialist, and a cardiologist was requested to rule out cardiac causes. It was found that the patient was suffering from chronic pulmonary obstruction with severe respiratory failure. The patient was placed under observation in the intensive care unit for several days to continue treatment, giving him the necessary medications until the patient improved, and he was then transferred to the ward department to complete hospitalization, and after the patient was admitted to the ward, the medical team followed up on his condition for two days, and his health condition was generally good, after which he was discharged home after he recovered from the illness.





Nutrition and Pediatrics Program

The program works to raise the level of medical care and services in Syria, by providing primary health care services through 3 specialized hospitals, and an ambulance system consisting of 5 cars designated for transporting cases of children and newborns, operating through full coordination according to the central referral system. It also includes providing services specialized in the fields of routine vaccination and short stature. In the context of nutrition, the program works on early detection and treatment of malnutrition, through two stabilization centers, 4 nutrition clinics, 30 rapid response teams, and 15 safe spaces for mothers and children. Services are provided by distinguished cadres who have followed the principle of continuous improvement in the quality of services provided.



Al-Sham Specialized Pediatric Hospital

The children's hospital is the largest in northwest Syria, as it contributes to enhancing the quality of specialized medical services by providing primary, secondary, and tertiary health care services for children. It covers the most populated area of Al-Dana in northern Syria. The hospital includes specialized outpatient clinics for children, a patient ward, and a pediatric intensive care unit. The neonatal intensive care unit, the intermediate care unit for children and newborns, the neonatal department (incubators), the general and individual isolation department, the malnutrition department, the rehabilitation and physical therapy department for children, and the routine vaccination department.

Work area

Idlib (Sarmada)

Number of beneficiaries

44K beneficiaries



Children

44,074k

beneficiaries



Persons with special needs

1,3k

beneficiaries

Sham Pediatric hospital in Sajo

The hospital contributes significantly to alleviating the suffering of the displaced population in the region by providing health care services to children 24 hours a day and free of charge. Its services cover more than ten camps and consist of a clinic department, an incubator department, a sick ward department, isolation rooms, and an intensive care department as well as the emergency department. The hospital provides primary, secondary, and tertiary health services such as examinations, patient admissions, and follow-up, in addition to providing supportive ancillary health services such as laboratory tests, x-rays, and medications, under the supervision of a specialized medical staff.

Work area

Aleppo countryside (Sajo)

Number of beneficiaries

21,1k beneficiaries



Children

21,1k

beneficiaries



Persons with special needs

1,4k

beneficiaries

Supporting integrated nutrition services in northwestern Syria

The project contributes to expanding the scope of nutrition services for children under the age of five and pregnant and lactating women, and plays an essential role in confronting chronic malnutrition and supporting breastfeeding through 9 rapid response teams and 9 safe spaces for mothers and children in 31 of the most dangerous communities in the governorates of Idlib and Aleppo, as 6 of these safe spaces are integrated with health centers and 3 others are integrated with hospitals (Sham Children's Hospital, Sham Internal Medicine Hospital, and the National Hospital in Azaz).

Work area

Idlib governorate- Aleppo countryside

Number of beneficiaries

110,09k beneficiaries



Children

58,5k

beneficiaries



Adults

51,5k

beneficiaries

Providing integrated nutrition services for vulnerable people in Idlib Governorate

The project contributes to expanding the scope of current nutrition services for children under the age of five and pregnant and lactating women, to fill the nutritional gaps occurring in northwestern Syria through 15 rapid response teams covering more than 30 residential communities and more than 60 camps for displaced people in Idlib and Aleppo and referring cases of malnutrition. The mixed hospital is divided into two main centers in the Sham Children's Hospital in Sarmada and the Sham Medical Complex in Sajo, which are considered two main centers for health and malnutrition cases, in addition to the stabilization center in Sarmada, which treats cholera cases with mixed malnutrition.

Number of beneficiaries

125,01k beneficiaries



Children

77,6k

beneficiaries

Work area

Idlib governorate



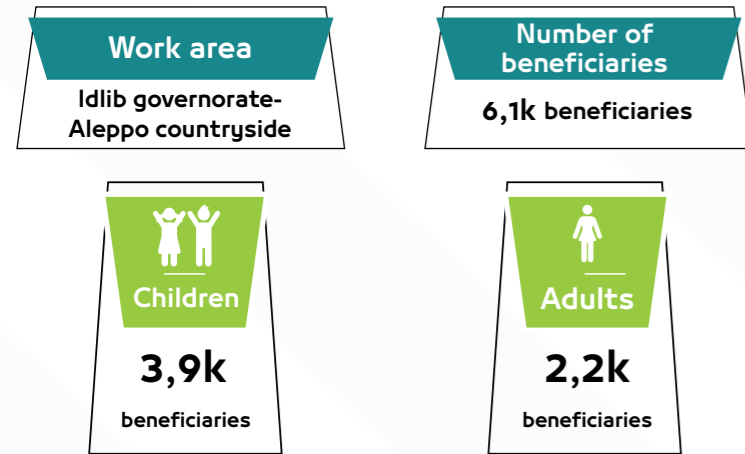
Adults

47,3k

beneficiaries

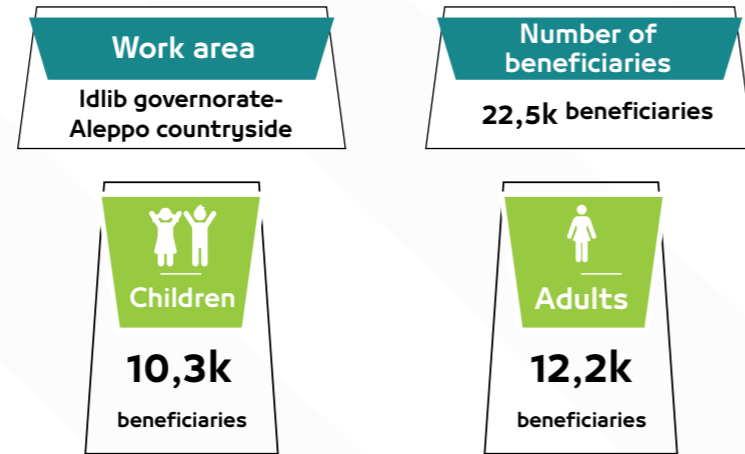
Providing life-saving nutrition services to vulnerable people in northwest Syria

The project contributes to meeting the urgent food needs of the most vulnerable population groups in the northwestern region of Syria and aims to mitigate the impact of the recent devastating earthquake on communities by contributing to confronting chronic malnutrition and supporting breastfeeding through 12 rapid response teams and a nutrition clinic at the Sham Children's Hospital and the situation has stabilized in Sham Children's Hospital, which is a primary center for treating health conditions in general and malnutrition in particular. The project covers more than 51 residential communities and 49 camps for displaced people in northwestern Syria.



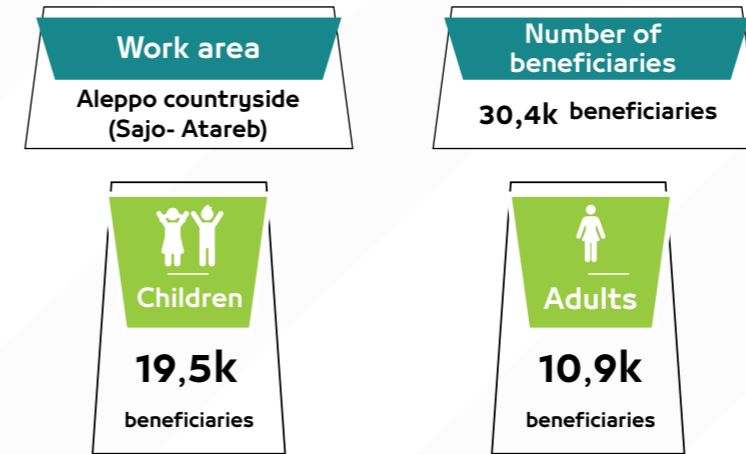
A project to support treatment of moderate malnutrition cases

Contributing to the provision of life-saving malnutrition treatment services by providing nutritional materials to treat moderate malnutrition through integration with other nutrition projects by providing LNS nutritional materials.



Mother and child spaces and rapid response teams

The project contributes to filling urgent gaps by expanding the scope of nutrition services and confronting chronic malnutrition (stunting) in the long term, especially after the earthquake. It includes children under the age of five and pregnant and breastfeeding women by providing treatment for cases of severe and moderate malnutrition without complications, as well as awareness services to reduce rates of malnutrition-related deaths to fill gaps in high-risk communities and IDP hosting areas across 4 rapid response teams in Aleppo and 2 mother and child areas.



Success story



The child, "Maryam," along with her mother came, after coordinating with another hospital, from which she was transferred to Sham Specialized Hospital for Children, with a story of a respiratory ailment. After performing the necessary tests and examinations, a general assessment of the child's clinical condition, and a chest x-ray, the child was suffering from a severe respiratory ailment. The child was admitted to the department of intensive care for newborns to receive appropriate treatment and apply mechanical ventilation to her. The child remained on the mechanical ventilation device for two days with monitoring of chest images and laboratory tests. After that, she was transferred to the CPAP device and remained on the device for two days as well, after which the child was transferred to the incubator department to complete the treatment. She remained in the department for two days and was then discharged home in good health.

Success story



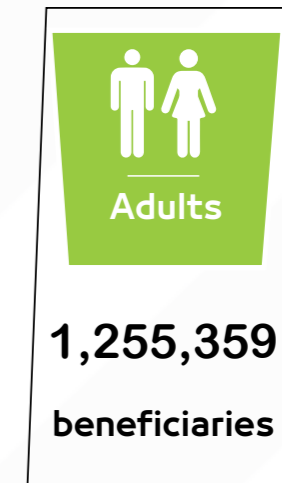
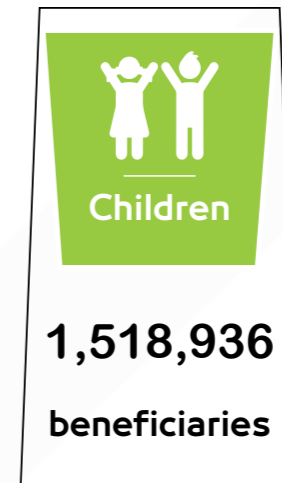
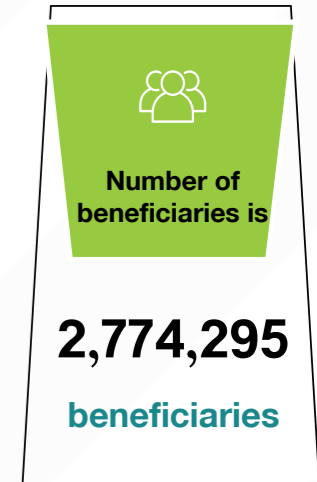
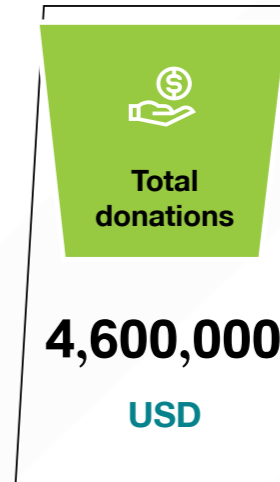
During the monitoring and surveying operations of the malnutrition treatment teams at the Sham Humanitarian Foundation in the Jisr al-Shughur area, it was discovered that the child, Jana, was suffering from acute and severe malnutrition. Child was examined for any signs of danger which was negative but she did have an impression edema. After that we conducted an appetite test for the child and she passed it, so we added her into the severe acute malnutrition treatment program, and we made several visits to the child to follow up on her condition and provide the therapeutic materials "plumpy nut." After the child improved, she moved to a state of moderate malnutrition, and we provided the child with the therapeutic materials related to the program, which is "plumpy sup". Then, after more than one visit, the child moved to the normal stage, and we provided her with nutritional supplements following the therapeutic materials, after which the child, Jana, fully recovered and became healthy.





Early Recovery Program

The program works to provide support to the most needy groups and families by contributing to building community capacities and raising professional competence as it provides vocational training services that end with grants to improve access to livelihoods and create job opportunities for vulnerable people affected by conflict to move from dependence on assistance to the production stage. Moreover, it works to support emerging projects by providing small loans within the scope of promoting self-reliance and consolidating a work culture, in addition to providing sustainable self-employment opportunities and facilitating the provision of the necessary opportunities for integration into the markets for those who have the skills, ability and desire to work on their own projects. This helps create new job opportunities and increase their income and rehabilitate markets and related infrastructure through refundable loans.



Kareem Fund project

A socio-economic development project based on the principle of microfinance. The Kareem Fund provides lending services to men and women on easy terms, establishes a culture of work and the principle of self-reliance, and provides sustainable self-employment opportunities for self-employment for Syrians, which helps create new job opportunities and increase their income. It also seeks to supporting livelihoods by providing the opportunity for those who demonstrate the skill, ability, and desire for self-employment to obtain the necessary liquidity to advance their own activities and develop these activities, which helps in creating new job opportunities, increasing their income, and rehabilitating markets.

Work area

Aleppo countryside
(Al-Bab)

Number of beneficiaries

140 beneficiaries



Adults

140

beneficiaries



Persons with special needs

3

beneficiaries

Supporting integrated health, emergency and protection services in northwestern Syria

The project aims to rehabilitate the damaged vital roads that connect the displaced to the host communities and serve several medical centers and hospitals in Sarmada and Al-Dana. It aims to provide rehabilitation services to cholera centers in Al-Dana and Atareb and create small job opportunities for 50 beneficiaries of the cash-for-work activity.

Work area

Idlib governorate-
Aleppo countryside

Number of beneficiaries

998,7k beneficiaries



Children

548,5k

beneficiaries



Adults

450,2k

beneficiaries



Persons with special needs

4,4k

beneficiaries

Early response to the earthquake in northwest Syria

The project aims to carry out emergency maintenance for six health facilities damaged by the earthquake in Idlib and Aleppo, moving more than 180,000 cubic meters of rubble resulting from the earthquake, paving 15 kilometers of roads, rehabilitating the Kafr Takharim market, and employing 110 beneficiaries of the cash-for-work activity.

Work area

Idlib governorate-
Aleppo countryside

Number of beneficiaries

606,9k beneficiaries



Children

301,8k

beneficiaries



Adults

305,1k

beneficiaries



Persons with special needs

66,5k

beneficiaries

Supporting integrated nutrition services and early recovery in northwestern Syria

This project aims to urgently rehabilitate 10 stations and 3 water networks in several areas of Aleppo and Idlib in coordination and cooperation with the Environmental Protection Agency. The process includes the completion of solar energy systems and the construction of a high reservoir, in addition to conducting awareness sessions with the aim of educating communities about hygiene and cholera prevention through community workers.

Work area

Idlib governorate-
Aleppo countryside

Number of beneficiaries

841k beneficiaries



Children

500,6k

beneficiaries



Adults

340,4k

beneficiaries



Persons with special needs

120

beneficiaries

Supporting the return of displaced people by rehabilitating water stations and networks

This project aims to urgently rehabilitate 10 stations and 3 water networks in several areas of Aleppo and Idlib in coordination and cooperation with the Environmental Protection Agency. The process includes the completion of solar energy systems and the construction of a high reservoir, in addition to conducting awareness sessions with the aim of educating communities about hygiene and cholera prevention through community workers.

Work area

Idlib governorate-
Aleppo countryside

Number of beneficiaries

188,2k beneficiaries



Children

80,9k

beneficiaries



Adults

107,3k

beneficiaries



Persons with
special needs

9061

beneficiaries

Rehabilitation of infrastructure in the Idlib countryside

The project aims to rehabilitate and repair vital roads that connect the displaced to the host communities through rehabilitating and asphaltting Harem Road, Hattan intersection, with a length of 5,300 meters, repairing Sarmada Road, Hattan intersection, with an area of 7,000 square meters, and creating short-term job opportunities for 200 beneficiaries of the cash-for-work activity, in addition to supporting small projects for 200 beneficiaries of widows and people with disabilities. It also includes sanitation activities that cover the rehabilitation and maintenance of sanitation infrastructure in the Sarmada area and conducting awareness sessions for communities and camps on preventing outbreaks of diseases.

Work area

Idlib governorate

Number of beneficiaries

139,2k beneficiaries



Children

87k

beneficiaries



Adults

52,2k

beneficiaries



Persons with
special needs

7,2k

beneficiaries

Success story



Mr. Ali Abdullah, 49 years old, is a resident of the village of Freika in the countryside of Jisr al-Shughur. He is married and has 7 children. He previously worked in Lebanon in construction work, and then returned to Syria and had no work left to support his family, until he heard about the announcement of the Sham Foundation about the start of a rubble removal project in the Jisr al-Shughur area and its countryside.

Mr. Ali says: I applied to the Sham Humanitarian Foundation to work within the rubble removal project with cadres of cash-for-work workers, and thanks to God Almighty, I was accepted after achieving the criteria required for acceptance into the project, and I began working with the team, and I am now happy and proud to work with the Sham Humanitarian Foundation and with this wonderful team, we cooperate hand in hand in removing earthquake rubble from the streets and alleys among our people living in the area, I am happy to return to work after a long break and I am now able to support my family, thanks to God.

Success story

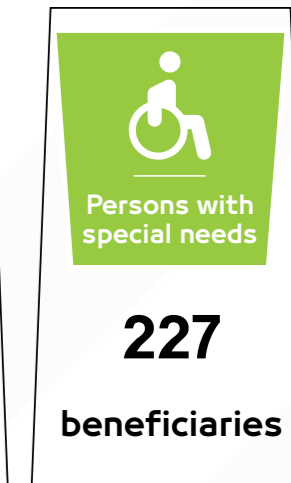
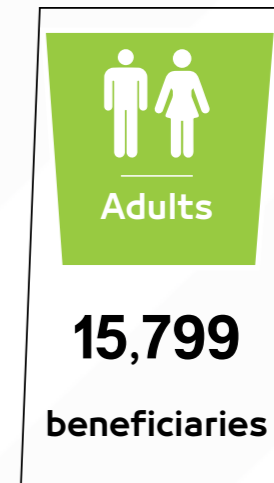
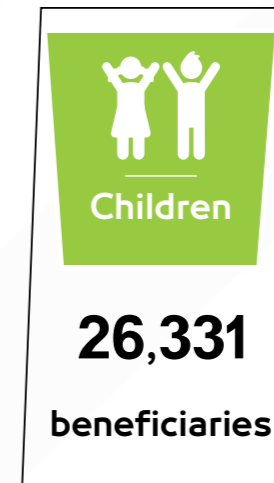
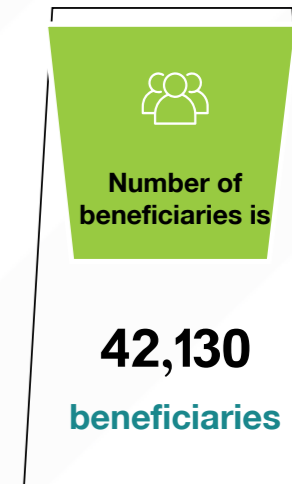
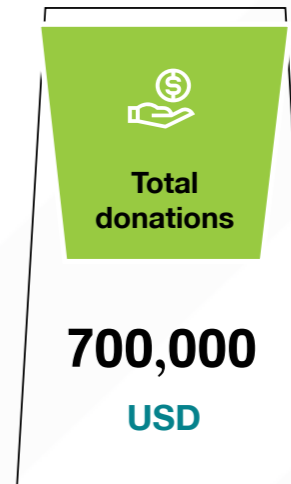


Mr. Adnan Juma, owner of a clothing store in Harem Market, which is one of the markets restored by the Sham Humanitarian Foundation. After appeals from the people of the region to restore the market after the damage it sustained as a result of the earthquake that struck northwestern Syria and southern Turkey on February 6, 2023, the Early Recovery Team at the Sham Humanitarian Foundation hurried to respond to the people's calls to rehabilitate and restore the aforementioned market. Mr. Adnan Juma says: "After the devastating earthquake occurred, the market was greatly damaged, and commercial activity declined, and shops began to suffer from weak demand from people. We suffered greatly from the weak financial returns coming from the shops, which negatively affected our ability to secure our daily necessities as a result of weak commercial activity in the market." He added: "After Al-Sham Humanitarian Foundation restored and rehabilitated the market again, its condition improved significantly in many ways, especially after the early recovery team completed the work before the winter, which reflected positively on the situation in the market, and the commercial movement was activated. We thank Al-Sham Humanitarian Foundation for all the efforts they made to accomplish this work."



Protection Program

The program operates in northwestern Syria, in Idlib and the northern countryside of Aleppo, and southeastern Turkey in the states of Adana and Hatay within the framework of the 2023 and 3RP Humanitarian Response Plans. It aims at promoting prevention and providing activities aimed at obtaining full respect for individual rights without discrimination, providing quality, principled and needs-based assistance to the most vulnerable and weak segment, improving protection for war-affected populations as well as providing increasing and equitable access of men, women, boys and girls to protection interventions in targeted locations. This is in addition to strengthening the capacity of actors to limit the use of harmful coping mechanisms by beneficiaries as well as analyzing and addressing protection risks through the provision of general protection activities, child protection activities, women's protection activities, and awareness of war remnants in line with international law, international humanitarian law, and international human rights law.



Aal Mahmoud Home

The project works to empower and protect refugee families without a breadwinner in Adana for one year, as 21 families from the most vulnerable groups benefited from the project, as the project had a positive impact in rehabilitating and empowering families and reintegrating them within the Turkish society. It also contributed to protecting families and reducing their exposure to abuse, exploitation and work, in addition to improving the educational, behavioral and cultural level of children by linking the benefit of the services of the home to the return and continuation of children in school, in addition to building the professional capacities of mothers and linking them to the labor market.

Work area

Turkey (Adana)

Number of beneficiaries

64 beneficiaries



Children

43

beneficiaries



Adults

21

beneficiaries

Strengthening the economic prospects of vulnerable Syrian refugee women in Adana (GIZ)

The project aims to improve employment opportunities for vulnerable women among Syrian refugees in Adana by developing their Turkish language skills, facilitating their access to job opportunities and facilitating their access to rights and services. Also, the project aims to enhance social cohesion between Syrian refugees and the host community in Adana and includes the following components:

- Providing a Turkish language course to enhance the skills of beneficiaries.
- Conducting community integration activities.

These activities support the integration of beneficiaries into the formal labor market and income-generating activities, and also work to enhance social cohesion and access to rights and services.

Work area

Turkey (Adana)

Number of beneficiaries

200 beneficiaries



Adults

200

beneficiaries

Dar Al-Bashaer for the care of refugee families without breadwinners

The project aims at providing protection services, asylum, and decent housing for refugee families without a breadwinner in Turkey, in addition to improving the educational level of children by supporting their continuation in school. Moreover, it works on enhancing the behavioral and educational aspects of the children and families of the Home, as well as helping to build the life skills of the Home's families and providing them with the Turkish language, which helps in their integration into Turkish society. It also works on providing a safe environment for them, which helps mitigate child protection risks and prevent them from being exposed to child protection risks and exposure to abuse and exploitation.

Work area

Turkey (Hatay)

Number of beneficiaries

35 beneficiaries



Children

25

beneficiaries



Adults

10

beneficiaries

Arms of Goodness 6

The project seeks to reach the most vulnerable groups, who are orphaned children, since they face increasing difficulties in life as a result of their special circumstances and the general difficult conditions that Syria is going through. The project is based on providing funds (guarantee, Eid, zakat, clothing) for 328 orphans in various amounts, as it aims to raise the standard of living for the orphan child and helping his family. This assistance also provides a focal point to protect the orphan from abuse or exploitation. The project also has a positive impact on the return of orphans to schools by linking assistance with education.

Work area

Idlib governorate-
Aleppo countryside

Number of beneficiaries

328 beneficiaries



Male
children

190

beneficiaries



Female
children

138

beneficiaries

You assistance is their hope

The project aims to provide the basic life-saving needs of children and their families by providing financial guarantee for 91 orphans for one year. The sponsorship aims to improve the health, living and educational standard of the orphan child, as it will provide a point of support to protect the orphan from exposure to human exploitation or abuse. It also has a positive impact on the return of orphans to schools by linking sponsorship with education and leaving labor. It also helps the orphan's family to meet the basic needs of the family and the orphan.

Work area

Idlib governorate

Number of beneficiaries

91 beneficiaries



Male children

47

beneficiaries



Female children

44

beneficiaries

Early response to the earthquake in northwest Syria

The project aims to strengthen the protective environment in earthquake-affected communities through case management services for separated and unaccompanied children who have lost their caregivers and reunited them with their extended families. This is in addition to children at risk and need direct protection and children who have been referred to Sham Surgical Hospital and Sham Pediatric Hospital as well as the Atareb Clinic, affiliated with the Al-Sham Humanitarian Foundation. Moreover, the project provides emergency needs through ECF interventions. It also contributes to raising awareness about the preventive measures used in cases of earthquakes and the preventive measures used to protect children during disasters and wars.

Work area

Idlib governorate-
Aleppo countryside

Number of beneficiaries

15,3k beneficiaries



Children

8,9k

beneficiaries



Adults

6,4k

beneficiaries



Persons with special needs

2,2k

beneficiaries

Multi-sectoral response to the earthquake

Improving the child protection environment in the targeted area for those affected by the earthquake who were transferred to Sham Hospital for Internal Diseases and temporary shelter centers for separated and unaccompanied children through case management and referral services for unaccompanied children, providing temporary alternative care for separated children, and providing legal services for civil documentation issues for children and caregivers, accompanied by awareness sessions on procedures used to reduce earthquake risks, mental health activities and psychosocial support.

Work area

Idlib governorate

Number of beneficiaries

26k beneficiaries



Children

16,9k

beneficiaries



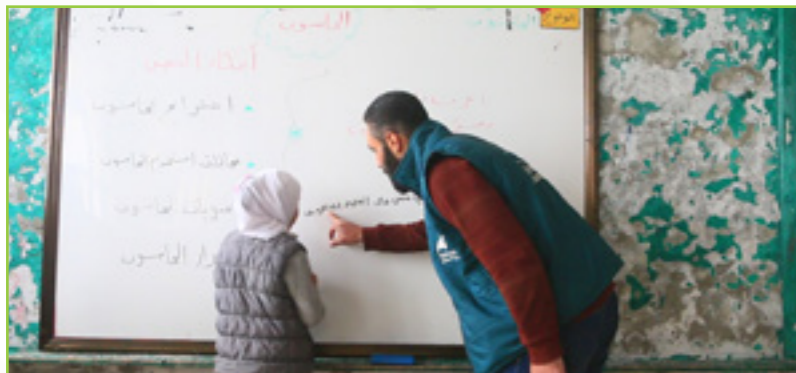
Adults

9,1k

beneficiaries



Success story



Through continuous cooperation between the case management teams in northwest Syria of the Sham Humanitarian Foundation and the foundation's guarantees office, we were informed about the case of the orphan girl "Shahd" and the difficult humanitarian conditions that her family is suffering from after the loss of the breadwinner and the mother's inability to cover all the expenses of the family members, and "Shahd" said she was on the verge of leaving school, and after following up on the case by the guarantees department at the Foundation, a monthly sponsorship for one year was approved for the child, which contributed to the resumption of her studies. After careful follow-up of the child by us, it became clear that the child had become one of the outstanding students in her school. The mother of the child Shahd said: Our situation was so difficult that Shahd was about to leave school, until Al-Sham Humanitarian Foundation came. The sponsorship team visited us at home and at Shahd's school and praise be to God, approval was given to provide sponsorship for Shahd for one year. Shahd was able to continue her studies and became one of the outstanding students. She also has many skills, such as drawing and memorizing the Holy Qur'an. I thank Al-Sham Humanitarian Foundation for sponsoring and assisting Shahd in completing her studies.

Success story



We received the child "Muhammad" with his caregiver at the protection center at Al-Sham Humanitarian Foundation. After evaluating the child's condition, it was found that he was suffering from severe fear as a result of the earthquake, which caused him social withdrawal and leaving school, in addition to psychological tension and sleep disturbances. Based on the child's condition, developing an appropriate plan for him that aims to reduce the pressure of psychological distress through psychological education sessions for the child and family, psychosocial support sessions, and increasing the child's self-confidence by integrating him with his peers. We also worked to return the child to school and encourage him to form new friendships with his friends to overcome the previous stage. The child Muhammad says: After the earthquake, I became very afraid. After that, I could not go out or play with my friends, and I left school. I could not sleep because of the nightmares I saw about the earthquake and the panic. Thank God, I am now in a better condition and have returned to school again.





Food Security and Emergency Response Program

The program works on the projects that aim to alleviate the human suffering and respond to the food needs necessary to obtain a healthy, sufficient, safe and nutritious foods that are suitable for everybody to make them able to enjoy a healthy and active life. The program has the objective of improving the level of food security through distributing free bread on displaced families. In addition to that, the program aims at implementing projects that can enhance the economic development in the fields of agriculture and livestock by working on increasing the production of agriculture corps and animals products and increasing their quality to fill the gap in the local consumption. Moreover, the program is concerned with supporting the community resilience, increasing income-generating activities, accessing safe, productive and fair-paid work, and rehabilitating the relevant infrastructure.



Total donations

230,000
USD



Number of beneficiaries is

36,334
beneficiaries



Children

20,229
beneficiaries



Adults

16,105
beneficiaries



Persons with special needs

606
beneficiaries

Kah bakery

The project works to enhance the food security of the displaced by distributing bread to the targeted families to reduce their living burdens and improve their living conditions. The bakery covered more than 25 camps for the displaced in the Dana area and produced daily about 5,400 bundles of bread weighing one kilogram. The project continued for 7 months through the current year. Moreover, the bakery team took all sterilization and preventive measures to limit the spread of communicable diseases in the region.

Work area

Idlib (Qah camps)

Number of beneficiaries

33,2k beneficiaries



Children

18,1k

beneficiaries



Adults

15,1k

beneficiaries



Persons with special needs

606

beneficiaries

Emergency response

The project works to enhance food security for the displaced by distributing food baskets to targeted families to ease the burdens on them and improve their living conditions. The project covered 530 families residing in housing camps in the Aleppo countryside (Afrin).

Work area

Aleppo countryside (Afrin)

Number of beneficiaries

3,07k beneficiaries



Children

2,1k

beneficiaries



Adults

965

beneficiaries



Internal Development

During the year 2023, the Foundation's team worked to develop the procedures and systems used in the departments and divisions, as the Grants and Compliance Unit worked to provide full support to the Programs Department in order to market projects and obtain funding for many important projects to meet the most urgent needs, in addition to working to ensure donor satisfaction through developing the applicable work mechanisms and their applications according to the new structure of the Foundation's strategy 2023-2025, to achieve a rapid response and professional products that meet the requirements of donors, and with the aim of monitoring and measuring the effectiveness and efficiency of operations and workers to ensure that project activities are implemented in accordance with humanitarian accountability standards. The Monitoring, Evaluation, Accountability and Learning Department carried out interviews with 13,147 Beneficiaries were distributed as follows: 8,090 beneficiaries of the medical program services, 1,303 beneficiaries of the nutrition program services, 2,147 beneficiaries of the food security and early recovery program services, and 1,607 beneficiaries of the protection program services, to obtain

feedback on the quality of implementation and the extent to which the projects achieve their desired goals.

In the journey of development and modernization, the financial and legal administration also adopted a series of steps that emulate the Foundation's future vision in ensuring transparency and credibility, by following an integrated strategy in which it maintains bridges of trust and effective communication between donors and concerned parties on the one hand, and the Foundation's financial management on the other hand, by providing clear and accurate financial reports enables all parties with a deeper and more accurate understanding of financial performance and management of funds and resources. In order to pave the way for continuous improvement and better direct efforts, annual financial statements are presented to reflect the Foundation's financial progress with transparency and credibility. -The Financial Department maintains confident steps in compliance with local and international laws and regulations. -Highlighting the balance of financial practices in an independent and objective manner by periodically subjecting the Foundation to independent financial and legal auditing through international auditing companies. The financial department responds to updates by developing standards and

regulating laws, in line with global financial standards. The Human Resources Unit worked on a number of matters that would develop and improve work through:

-Department automation: Contracting with a specialized programming company that provides advanced human resources software.

-Performance evaluation and management: The department was able to complete the 360-degree performance evaluation process based on the system of job competencies, capabilities and skills, and the first employees were honored throughout the process.

-Training and professional development: An annual training plan was prepared based on an analysis of the outcomes of the performance evaluation process and an analysis of the outcomes of the job satisfaction questionnaire, in a way that make it includes the most important specific training required.

-Policies and procedures: Reviewing and preparing several policies and procedures, the most important of which are: Human resources policy, attendance and absence policy and procedure, employment policy and procedure, training and professional development policy and procedure, and job satisfaction procedure, which reached 88%.



Al-Sham Humanitarian Foundation is keen to convey the Syrian voice to various local and international events, as a representative of Syrian humanitarian organizations and to actively participate in various coordination platforms, in order to advocate for the humanitarian situation and achieve a better response, including:

- Participation in the SOM meeting in Berlin May 2023.
- Participation in the United Nations mission to Somalia in May 2023
- Contributing to the Lifeline campaign with the SNA coalition to renew the Security Council resolution on the entry of cross-border aid.
- Participating as a speaker in a number of events on local empowerment (Localization) and its application in the Syrian case.
- International Donors Conference - Brussels.
- Participated in a number of statements and advocacy messages issued by the SNA Alliance on the humanitarian response.



Since its inception, the Foundation has occupied a number of coordinating roles in many technical groups in the sectors it operates in, in addition to the strategic humanitarian platforms- as a representative of the Syrian humanitarian organizations - in order to advocate for the humanitarian situation in northwestern Syria and the refugee response in Turkey.

- Membership in the steering committee of the Syrian Non-Governmental Organizations Alliance (SNA).
- Membership in the Strategic Steering Group (SSG)
- Membership in the strategic advisory group for the nutrition sector in northwestern Syria.
- Membership in the strategic advisory group for the early recovery sector in northwestern Syria.
- Participation in the HLM high-level meeting in Istanbul.

Memberships

Al-Sham Humanitarian Foundation believes in the importance of networking and coordination in humanitarian work to increase the impact of the humanitarian response on the ground. It is a member of various platforms and networks, which has enabled it to increase its presence locally and internationally.



Partners



Addresses of Foundation's offices

Istanbul office

Göztepe Mah. İnönü Cad. No:122
Başkule Plaza Kat:10 Daire:104,
Bağcılar, İstanbul - Turkey.



Gaziantep office

İncilipınar Mah - Gazimuhtarpaşa Bulv -
Kepkepzade Park İş Merkez - A Blok - Bina
No:8 -Kat:18 - 5 Nolu Büro --- Şehitkamil/
Gaziantep



Adana office

Derneğimize bağlı olarak Toros Mah - 78004 Sok - No: 3 - Cevdet Karcı Apt --- Çukurova/Adana

Idlib office

Sarmada - South Sarmada
Roundabout - Main Road - Al-
Amoud Junction - Imad Al-Din
Building, 3rd floor



Aleppo countryside office

Sajo - Aleppo countryside - Syria

Bank account information

Al-Sham Humanitarian Foundation thanks all partners and donors for their great support and giving it confidence to deliver humanitarian aid to those who deserve it, without which the Foundation would not have been able to reach those affected and alleviate their suffering in these difficult times.

Turkish Lira

Bank: ZİRAAT KATILIM

Account Name: İNSANİ ŞAM DERNEĞİ

IBAN : TR01 0000 8768 0009 9000 0020 20

Dollars

Bank: ZİRAAT KATILIM

Account Name: İNSANİ ŞAM DERNEĞİ

IBAN : TR02 0000 8768 0009 9000 0020 90

EURO

Bank: ZİRAAT KATILIM

Account Name: İNSANİ ŞAM DERNEĞİ

IBAN: TR03 0000 8768 0009 9000 0020 63





مؤسسة الشام الإنسانية
Al Sham Humanitarian Foundation



AHFrelief | AHF.ngo